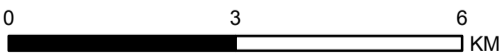


> Prepared by Mipela GeoSolutions > Phone: +61-7-3252 5589 > Web: www.mipela.com.au > Email: info@mipela.com.au

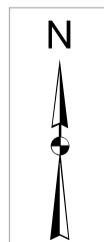


Scale: 1:100,000 at A3

**DATA SOURCES:**

The road network and other topographic information is based on Street Pro 2007 and 250k Geodata (Geoscience Australia).

Crime Stoppers Area Committee Boundaries provided by Trevor O'Hara, Chief Executive Officer of Crime Stoppers Queensland Limited, on the 29/11/2013. Amendments to boundaries made from information provided on 29/11/2013.



Path: T:\Projects\070574\_CSOL\_Mapping\_Updates\2013\2013\_Crime Stoppers Mapping DDP\_Portal.mxd