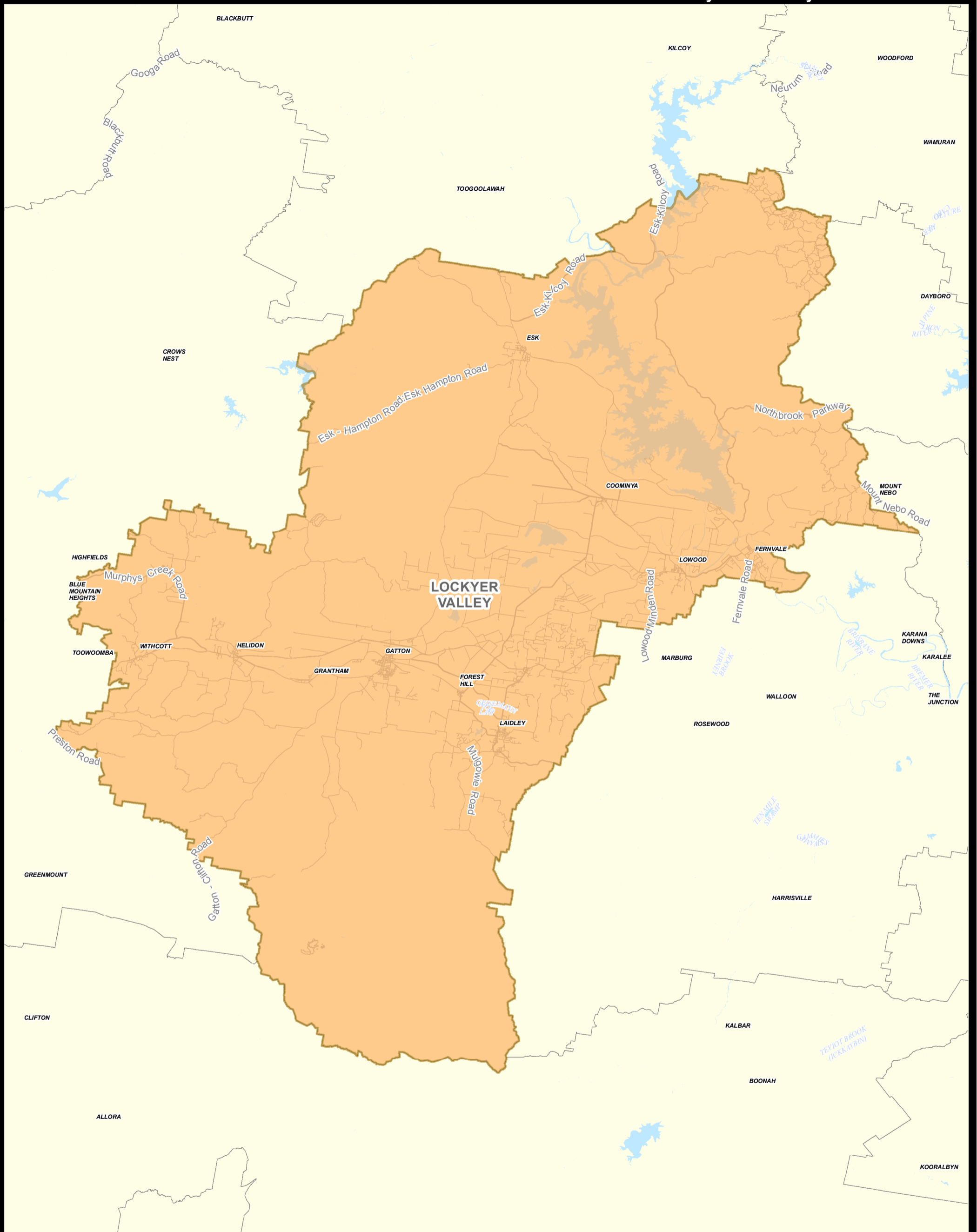
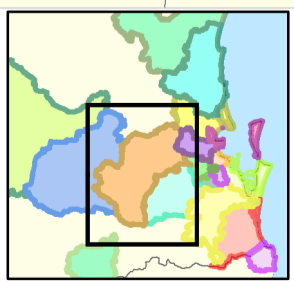


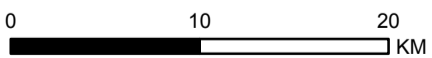
# CRIME STOPPERS VOLUNTEER AREA COMMITTEE: Lockyer Valley



Path: I:\Projects\7070574\_CSOL\_Mapping\_Updates\2013\2013\_Crime Stoppers Mapping DDP\_Portal.mxd



> Prepared by Mipela GeoSolutions > Phone: +61-7-3252 5589 > Web: www.mipela.com.au > Email: info@mipela.com.au

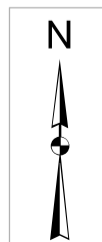


Scale: 1:400,000 at A3

**DATA SOURCES:**

The road network and other topographic information is based on Street Pro 2007 and 250k Geodata (Geoscience Australia).

Crime Stoppers Area Committee Boundaries provided by Trevor O'Hara, Chief Executive Officer of Crime Stoppers Queensland Limited, on the 29/11/2013. Amendments to boundaries made from information provided on 29/11/2013.



Mipela (GIS) Pty Ltd does not guarantee the accuracy or completeness of the map and does not make any warranty about the data.  
Mipela (GIS) Pty Ltd is not under any liability to the user for any loss or damage (including consequential loss or damage) which the user may suffer resulting from the use of this map.